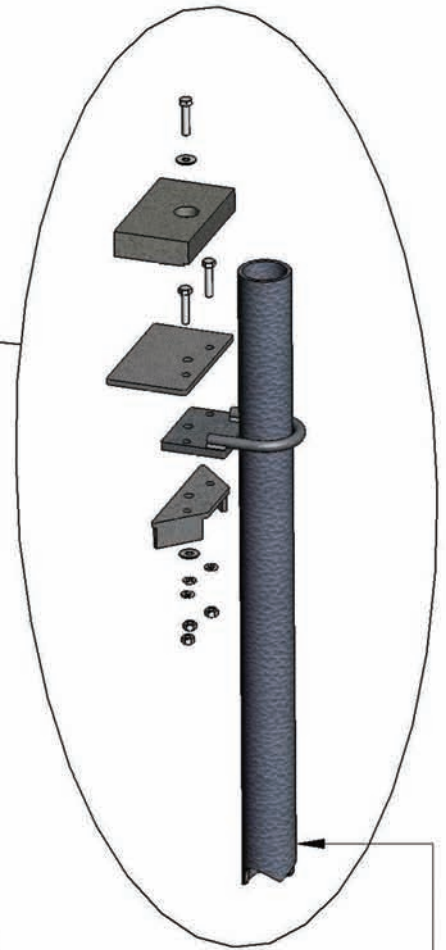
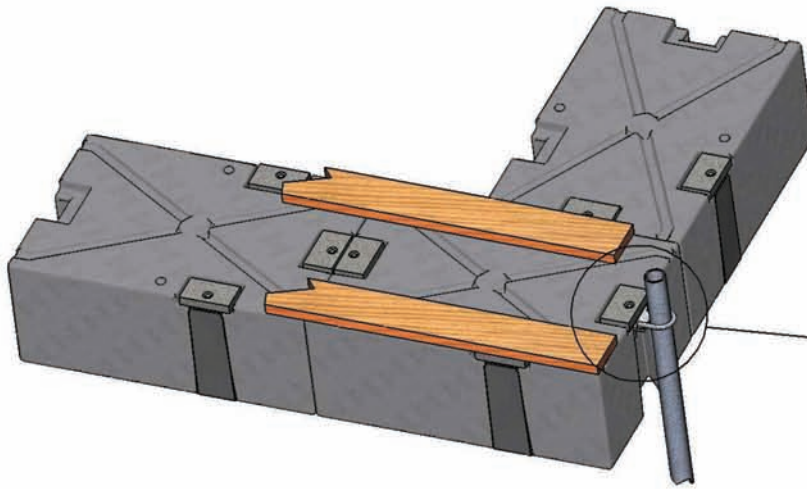


Piling Post Kit



For use with standard
2 1/2" O.D. pipe
Wall thickness 1/8 Minimum

- S.S. Header Block Bolt
 - S.S Flat Washer
 - Header Block
 - S.S. Bolts
 - Ring Assembly Top Plate
 - Piling Post Ring
 - Dovetail Bottom Plate
 - S.S Flat Washer
 - S.S. Lock Washer
 - S.S. Nylocks
- Parts Are Hot Dip Galvanized